



NOVEMBER 2021

Farmington Day School visited the Pumpkin Patch. For many, this outing is their first bus ride. While there, they enjoyed a hayride, picking their own pumpkin, and a petting zoo.

THIS ISSUE:

FRIENDSGIVING
Page 02

DAY SCHOOL
Page 03

CHRISTIAN EDUCATION
Page 04

SERVICE
Page 05

WRITE FOR ADVENT
Page 06

PRESBYTERIAN WOMEN
Page 07

VISIO DIVINA
Page 08

WORSHIP
Page 10

STEWARDSHIP
Page 11

BIRTHDAYS
Page 12

Deepening Our Discipleship

BY REV. REBECCA LUTER

Do you remember the world before March 2020? In the first months of the pandemic, I preached a series titled “Mind the Gap: Exodus and the Space Between.” We were in a liminal space not unlike the Israelites wandering in the desert between Egypt and the Promised Land. We are now moving toward Mt. Nebo, where Moses was able to look over and see where they were headed.

We are not where we were, so how will we move into this new space and time?

How are we called to fulfill the Great Commission?

“Then Jesus came to them and said, “All authority in heaven and on earth has been given to me. Therefore go and make disciples of all nations, baptizing them in the name of the Father and of the Son and of the Holy Spirit, and teaching them to obey everything I have commanded you. And surely I am with you always, to the very end of the age.” – Matthew 28:18-20

When asked the greatest commandment in the Law, this is what Jesus said: Jesus replied: “Love the Lord your God with all your heart and with all your soul and with all your mind.’ This is the first and greatest commandment. And the second is like it: ‘Love your neighbor as yourself.’ All the Law and the Prophets hang on these two commandments.”

The church is called to reach and teach people to love God and love people. In the coming months, Session will be evaluating the purpose behind and fruitfulness of ministries we had before March 2020. What will change? What will stay the same? What could be?

I encourage you to share what you have missed with me or a member of Session. If you have an idea, share it! Let’s all stand at the top of Mt. Nebo and look over into the Promised Land together. Then, let’s go!

Farmington Presbyterian is “a home for your family with a heart for God’s world.”



FRIENDSGIVING

November 5 at 5

**Gather with the Community
In the Backyard
Farmington Presbyterian Church**

Get Together with Your Friends
Bring Your Kids
Enjoy Homemade Pizza (\$5 per slice)
Kona Ice
Face Painting

MUSIC BY
Ted Horrell and the Monday Night Card

**DONATIONS AND PROCEEDS BENEFIT
FLOOD VICTIMS IN WAVERLY, TN**

DAY SCHOOL

Happy Fall! Pictures from the children's visit to the pumpkin patch.



Gather with the Farmington Family for

An Evening of Gratitude

A THANKSGIVING SERVICE
OF WORSHIP

Wednesday • 17 November
2021 • 6:00 p.m.
In the Sanctuary and Online



www.farmingtonpres.org

CHRISTIAN EDUCATION

CONFIRMATION

NOVEMBER 14

10am - 10:45 & 2pm-4pm

All students in youth are invited to consider what they believe as we explore the Presbyterian faith during Sunday School. Students are asked to make a public profession of faith and to answer these questions below.

Students will begin shaping their profession of faith and consider these questions in a special Sunday School and Youth Fellowship time of study.

- **Trusting in the gracious mercy of God, do you turn from the ways of sin and renounce evil and its power in the world?**
- **Who is your Lord and Savior?**
- **Will you be Christ's faithful disciple obeying his word and showing his love?**
- **Will you devote yourself to the church's teaching and fellowship, to the breaking of bread and the prayers?**

NOVEMBER 21

10am - 10:45 & during worship

CONFIRMATION SUNDAY

We invite young people to publicly profess their faith in front of God and this congregation by answering the questions above with "I do" and "I will, with God's help"



Things the Bible DOESN'T Say.

- Money is the root of all evil.
- This too shall pass.
- Cleanliness is next to godliness.
- God works in mysterious ways.
- Be in the world, but not of the world.

If the Bible doesn't say them, why do we? How true are they, really? And what does the Bible really say about these topics? Rev. Rebecca will be facilitating our discussion on Sunday mornings, November 7th and 14th, at 10am in the East Room or on Zoom (no passcode needed).

All are welcome to join the discussion!

Adult Bible Study

Led by Rev. Rebecca

Sunday's @ 10 AM

Meeting ID: 835 3196 2842

no passcode needed

SERVICE

MISSION TRIP

XPUJIL MISSION TRIP 2022

Our congregation has commissioned teams to build cisterns in the Yucatan region of Mexico since 2013. We were not able to go in 2020 or 2021, but the work has continued through our partners at the church there. We are hopeful that a group will be able to go in 2022. The cost of going is shared equally between the individual, the church, and fundraising efforts. Generally, the total expense is around \$1,500 per person. This amount includes our donation toward the building supplies, room & board, and rental vehicle & flights. If you are interested in knowing more about being on a team, please email church@farmingtonpres.org.

FELLOWSHIP

Wednesday Dinner & Menu

Scott and Becky Hutchins (Firehutch Fine Foods) are now catering to-go orders for dinner to be picked up on Wednesday evenings at the church between 5:00-5:30pm. They are donating 10% back to Farmington. If you would like to order, please contact them at hutchinsathome@gmail.com.

Nov 3 - Spaghetti Pie

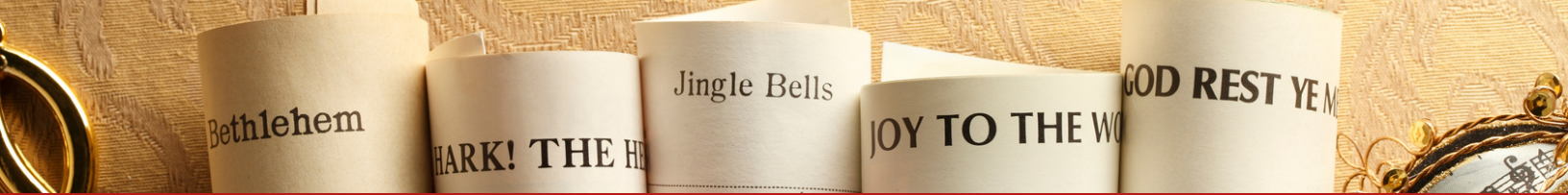
Nov 10 - TexMex King Ranch Chicken

Nov 17 - Grilled Chicken with Bow Tie Pasta & Tuscan cream sauce

Nov 24 - Smoked or Fried Turkeys

Wednesday Night Dinner & Fellowship

We have decided to delay the start of dinners as we were aware that many were not planning to attend due to the current wave of COVID-19 in our community. We will continue to monitor the situation.



Submissions for an Christmas Song - Advent Devotional 2021

As we enjoy fall weather, I invite you to join me in looking forward to Advent and Christmas. This year, we will be having devotions inspired by your favorite Christmas songs. Here are the details:

1. What Advent or Christmas hymn or song fills you with hope and joy? Who do you love to hear sing or play it?

This song may be one that you love to hear playing over the sound system while you shop. It may be the hymn that you look forward to singing at church. It may be a song with a personal story or one that you appreciate for its history. It may be a song you find yourself humming or one you like to play while you bake or decorate or wrap presents.

2. Why does this song give you joy?

3. Email it to me by November 22nd at rluter@farmingtonpres.org.

Options:

1. You may choose a religious or secular song.

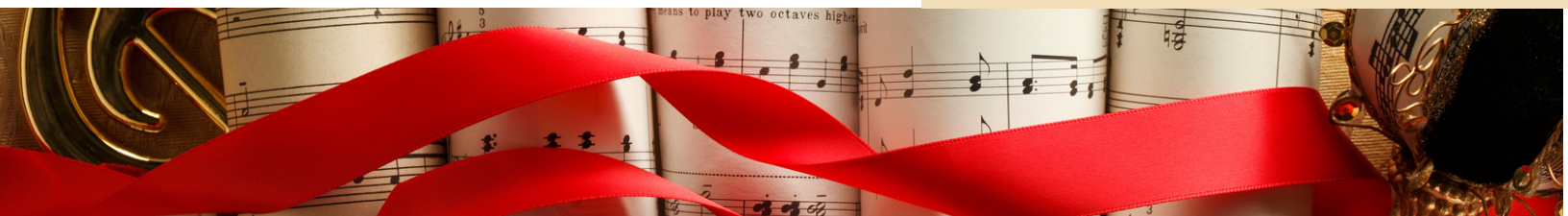
2. You may discuss with your family and submit a family devotion.

I look forward to hearing all of your Christmas music stories! I know that they will be a blessing to us as we prepare our hearts and minds for the birth of the Christ child.

Grace and peace,
Rev. Rebecca

NEED SOME INSPIRATION? HERE'S A LIST OF POPULAR HYMNS:

- Angels From the Realms of Glory
- Angels We Have Heard on High
- Away In a Manger
- Break Forth, O Beauteous Heavenly Light
- Come, Thou Long-Expected Jesus
- Go, Tell It on the Mountain
- God Rest Ye Merry Gentlemen
- Good Christian Friends, Rejoice
- Hark! The Herald Angels Sing
- In the Bleak Midwinter
- Infant Holy, Infant Lowly
- It Came Upon the Midnight Clear
- Joy to the World
- Lo, How a Rose E'er Blooming
- Love Has Come
- My Soul Cries Out with a Joyful Shout
- O Come, All Ye Faithful
- O Come, O Come Emmanuel
- O Holy Night
- O Little Town of Bethlehem
- Of the Father's Love Begotten
- On Christmas Night All Christians Sing
- On This Day Earth Shall Ring
- Once In Royal David's City
- People Look East
- Prepare the Way, O Zion
- Silent Night
- Still, Still, Still
- The 12 Days of Christmas
- The Angel Gabriel
- The First Noel
- The Holly and the Ivy
- The Snow Lay on the Ground
- There's a Star in the East
- We Three Kings of Orient Are
- What Child Is This?



PRESBYTERIAN WOMEN PICNIC

Tuesday, October 12 was a beautiful day for the women's picnic! Our church's backyard provided a perfect location for serenity and fellowship. We enjoyed our casual time together and of course the food was excellent! We invite you to join us for our monthly Horizon Bible study (check the Church Bulletin for details). Who knows...another fun event may occur in the future!



VISIO DIVINA

The Women's Circle of Farmington meets by Zoom each month. During our recent meeting in October, several "Visio Divina" examples were shared. We provided images that represented what God revealed to us in the reading of Matthew 1:1-18 (Jesus' genealogy). The Horizon Bible study, *What My Grandmother's Taught Me*, promises to be thought provoking and interactive. All women of the church are encouraged to attend. We will discuss Lesson 3 in November.

REFLECTIONS ON BEGINNINGS AND FAMILY TREES

What image represents what God has revealed to you in the reading of Matthew 1:1-18?

As I was riding home one evening, I looked though the car window and was blessed with this magnificent view. My eyes were immediately drawn to the beauty of the moon. As my gaze gradually strayed to surrounding sky, I felt a connection with all of my grandmothers.

This is the same moon that we have all shared. The surroundings and the times have been different but there is a connection that draws us together. I thank God that I have known some of these women and have heard stories about many more. It gives me a sense of belonging.

- Ann Erickson





REFLECTIONS ON BEGINNINGS AND FAMILY TREES

What image represents what God has revealed to you in the reading of Matthew 1:1-18?

The Sistine Chapel is a sacred place where the paintings show truths expressed in the Holy Scriptures: The story of the Creation of Man to the Fall of Man and The Last Judgement which is on the Altar wall. It makes you wonder where your family lineage falls in the descendants of Abraham.

-Mary Lou Collins



REFLECTIONS ON BEGINNINGS AND FAMILY TREES

What image represents what God has revealed to you in the reading of Matthew 1:1-18?

What's my connection to my heritage? It's like spots of light intertwined in space. Some of the light is more brilliant and catches our attention. All the light is connected and necessary for the whole component to survive. I am one of these dots of light ! I could not be here without the other lights. How bright I shine is up to me!

- Jinney Hart

REFLECTIONS ON BEGINNINGS AND FAMILY TREES

What image represents what God has revealed to you in the reading of Matthew 1:1-18?

I see a diverse group of people from all walks of life who are 'connected' and make alliances through origin, place of residence, marriage, family, and career. I also see confusion and conflict as well as direction and clarity. There is vagueness and uncertainty in the social structure and various relationships that may have been cultivated choosing these life paths. Perhaps there is a stigmatism based on race or religion dividing these relationships that happened through no fault of anyone other than their genealogy. Thus, both voluntary and involuntary circumstances dictate the succession of the family lineage.

- Catherine Johnson

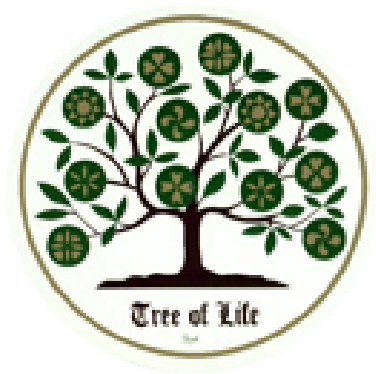
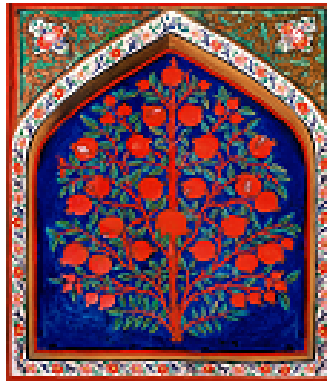


REFLECTIONS ON BEGINNINGS AND FAMILY TREES

What image represents what God has revealed to you in the reading of Matthew 1:1-18?

Tree of Life --- original one was in the Garden of Eden ---no touch apples, etc. Then there came the Tree of Life in ancient Turkey ---now we have trees displayed on walls of churches etc. that have people's names written on each leaf. Marty had a huge "family tree" on the wall of his office here at home dating back to 1066 and an ancestor named deHyde --- from whence cometh my mother's side of the family. Then I think of Aspen trees ---they grow out west - and the grow with roots that extend from tree to tree all coming from one individual.

- Sara Miller



WORSHIP

CONGREGATIONAL MEETING

A Congregational Meeting was held October 3rd for the purpose of receiving and acting on the report of the 2021 Nominating Committee. Bonnie Blair, Bob Plotner, and Mike Schneider were nominated and elected to serve on Session as Elders in the Class of 2024. Jackie Hall was nominated and elected to serve on Session as an Elder in the Class of 2023, replacing Suzanne Thomas, who has moved out of state. Alexis Green and Abby Vinnall were nominated and elected to serve on the Farmington Presbyterian School Board as Parent Representatives in the Class of 2023. Thank you to all who serve God through Farmington Presbyterian Church.

Session Report

Session examined and affirmed the Elder Training of Bonnie Blair, Jackie Hall, Bob Plotner, and Mike Schneider. Received and discussed the financial projection, amended the Personnel Policy as recommended by Administration Committee to incorporate new benefits afforded to salaried staff through the PC(USA), and received an update on the Day School. Doug Barr and Bonnie Blair were elected to serve as Ruling Elder Commissioners to the November Stated Meeting of Presbytery at Idlewild Presbyterian. Session received an update from the Service Committee regarding winter shelter with Room in the Inn, the Friendsgiving fundraising event, and plans to host a Rise Against Hunger packaging event in the spring.

In addition, Session met with Kirsten King, who is completing her seminary studies and discerning her call to ordination. She is currently enrolled as an Inquirer in the Presbytery of the Mid-South and came requesting Session's recommendation that she be enrolled as a Candidate for Ministry. With great joy, Session read her Statement of Faith and talked with her about her spiritual growth and preparation for ministry, unanimously affirming Kirsten's suitability for ministry and recommending that she be enrolled as a Candidate for Ordained Ministry in the Presbytery of the Mid-South.



The logo for this year's Stewardship Campaign, depicting the theme "Blessed to Be a Blessing," was designed by our own Christian Barlow. Christian has studied graphic design at Southwestern and attends our Youth Fellowship and Young Adult Bible Study.

What symbols can you find in the logo?

The heart reminds us that we are called to be a home for God's family with a heart for God's world. The hand reminds us that all of our blessings come from God. The flame reminds us that God's Holy Spirit works through our hands. Farmington Presbyterian Church is certainly blessed to be a blessing!

Blessed to be a Blessing



Stewardship Sunday, we will dedicate our 2022 Estimates of Giving to the work of God through Farmington Presbyterian Church during the Worship Service at 11am.

Those worshipping online may access a Pledge Card on our website www.farmingtonpres.org and return it to church@farmingtonpres.org or to 8245 Farmington Blvd., Germantown, TN 38139.

Your Estimate of Giving allows the Session to budget and plan for ministry and service in 2022. Please prayerfully consider how you want to be a blessing.

**NOVEMBER
14
During
Worship**



Fellowship of the Youth

NOVEMBER 6TH FROM 2-4 PM

Youth Fellowship will watch part 2 of the Fellowship of the Ring. We are exploring the theological underpinnings of Tolkien's Middle Earth.

Though Tolkien states in his forewords that there is no allegory to the Lord of the Rings, his Catholic practices and beliefs, as well as his experiences in war time, were influential in the crafting of the landscape, story, objects, and characters within the pages and in the film.

After watching the film we will gather the following week to discuss what we saw and what it says about God and our role in the world

Be advised, this film is PG-13 and contains some violent images.



Sunday Worship Online

Join us, Sunday mornings for worship on YouTube. You can find us through our website, www.Farmingtonpres.org, or on YouTube at www.youtube.com/c/farmingtonpresbyterian. Don't forget to subscribe so you never miss our services or video events.

And don't forget to like, share, and hit that subscribe button!



NOVEMBER BIRTHDAYS

- 1 Charlene Still
- 1 Cristaldawn Smith
- 3 Abby McNeer
- 6 Deborah Aleman
- 6 Rachel Lunsford
- 9 Nadine Oest
- 10 Eliza Schneider
- 10 Chris Luter
- 11 Meg Sweet
- 11 Max Egan
- 13 Jeremy Paine
- 13 JB Wann
- 17 Nicholas Luter
- 18 Kirsten King
- 19 Rachel Barr
- 20 Laura McDowell
- 22 Amelia Palmer
- 24 Lauren Thomas
- 24 Darlis Scobey
- 24 Cooper Patterson
- 26 Kristin Davis
- 28 Graham Perkins

Staff Extensions

Rev. Rebecca Luter, Pastor, Ext. 3134
 Doug Barr, Director of Christian Education, Ext. 3130
 Polly Knight, Financial Records Keeper, Ext. 3136
 Shelley Wann, Church Office Administrator, Ext. 3131
 Gretchen Burch, Director of Day School, Ext. 3132
 Andrea Soto, Assistant Director of Day School, Ext. 3138
 Anthony Jones, Maintenance Technician

Session Members

Moderator - Rev. Rebecca Luter
 Administration – Ann Erickson
 Christian Education – Doug Barr
 Clerk – Laurinda Ingram
 Congregational Care – MaryShelley Ritchey
 Fellowship – Becky Hutchins
 Property and Grounds – Roland Mittag
 School Board – Susan Bryant
 Service – Jinney Hart
 Treasurer—Melissa Still
 Worship – Paul King



Content for the December New Vision newsletter is due Tuesday, November 16.
Email articles and event information to Shelley Wann at shelley@farmingtonpres.org



Farmington Presbyterian Church & Day School
8245 Farmington Blvd.
Germantown, TN 38139